

Aeration Systems and Fan



**MYSILO<sup>®</sup>**  
GRAIN STORAGE SYSTEMS

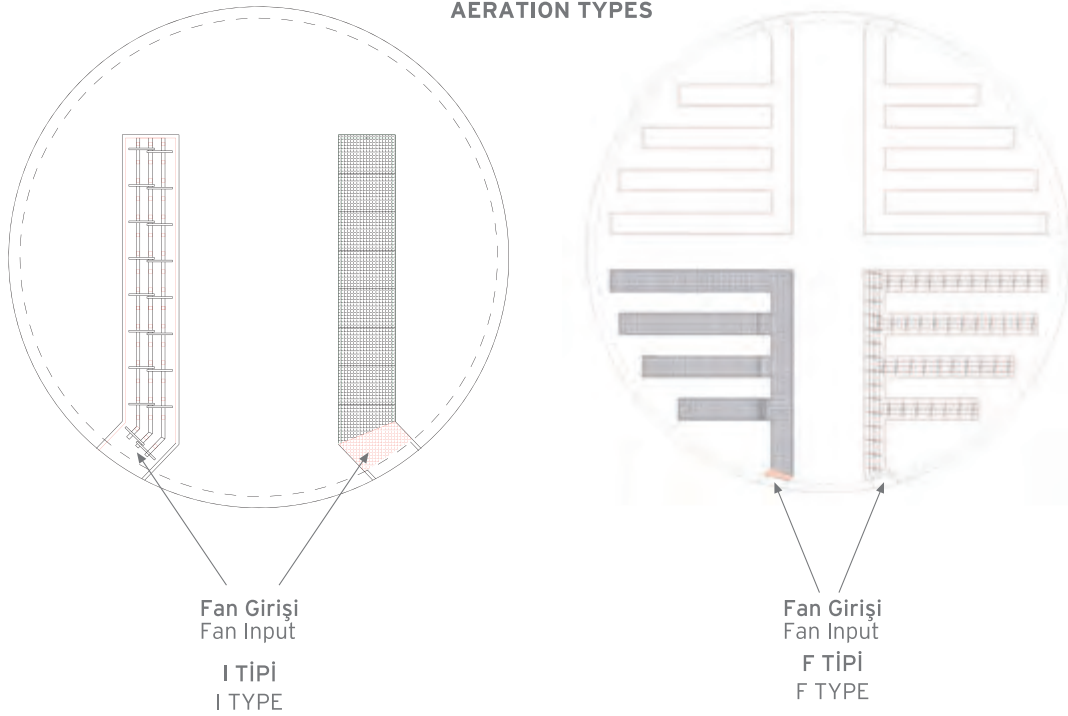
#### DUCT TYPE AERATION SYSTEM

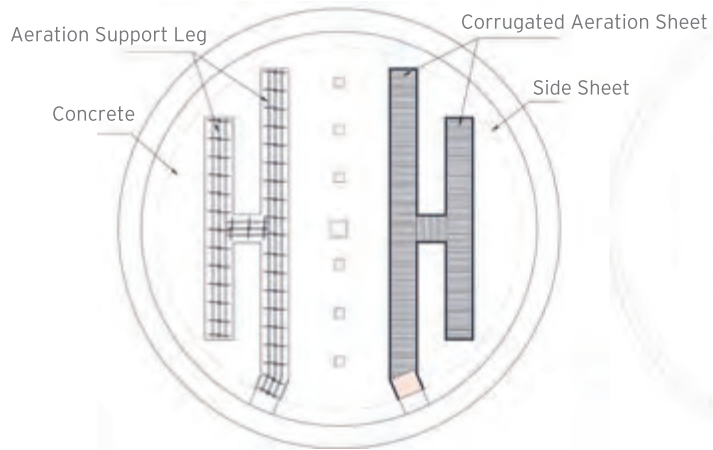
Design of duct type aerations system is as important as silo design. Wrong design means that all facilities run waste and wasted invetsment. While the duct aeraiton systems is designing , weather conditions of area , altitude height, to be storaged product specifications, silos capacities are taken account by our engineers.

- One of the most important specifications in design of aeration is usage of right perforated sheet.
- Requirements aeration duct surface area , good design of air flow, choosing right fan.
- Duct cleaning, strong of perforated sheet construction .

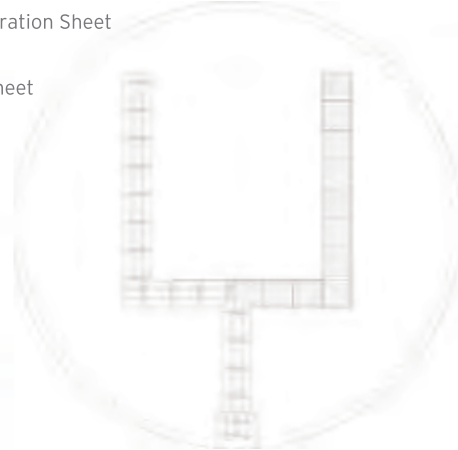
Mysilo duct type aeration system supplies the best design by taking account all of these parameters.

#### AERATION TYPES

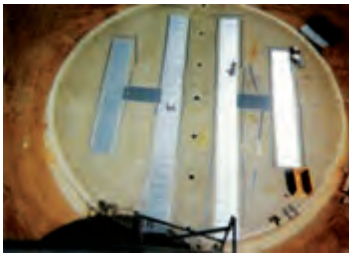




Y TYPE

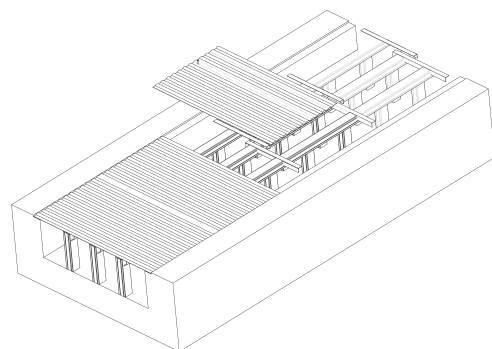


Y TYPE



#### CORRUGATED AERATION SYSTEM

Corrugated aeration system provides quality ventilation with %21 high rate of air flow. Ventilation grille increase surface of aeration area by corrugating and durability of ventilation grille increases. Member of aeration system manufactured from galvanized sheet, are long lasting.



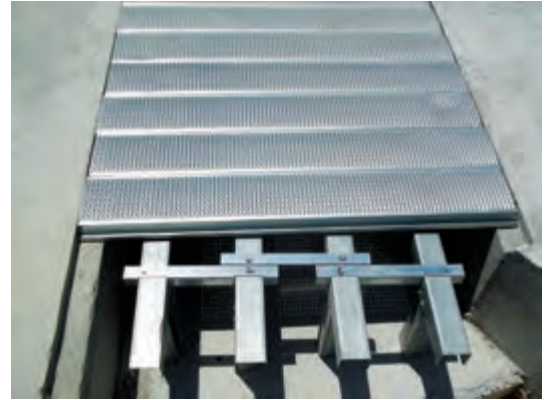
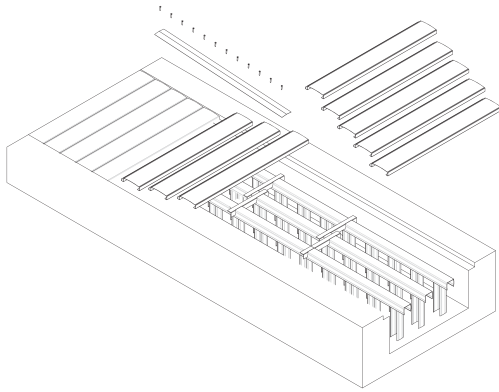
#### LOCKED AERATION SYSTEM

Locked aeration systems have %15 rate of air flow.

Locked grilles provides high durability, easily installations and cleaning.

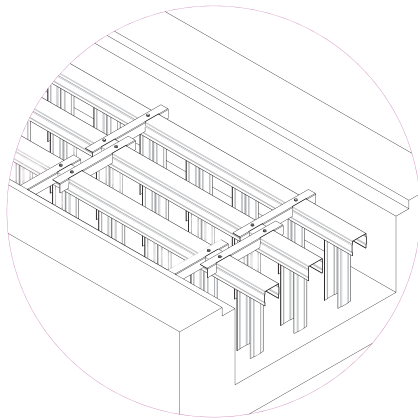
Louver type locked aeration grille allows small kernels grain ventilation such as canola.

Member of aeration system manufactured from galvanized sheet, are long lasting.



#### Aeration Support

275 gr/m2 cold-rolled steel is formed in "U" shape which provides maximum strength. It has a user-friendly installation and maintenance. Additionally air transition is maximum when compared to its competitors.





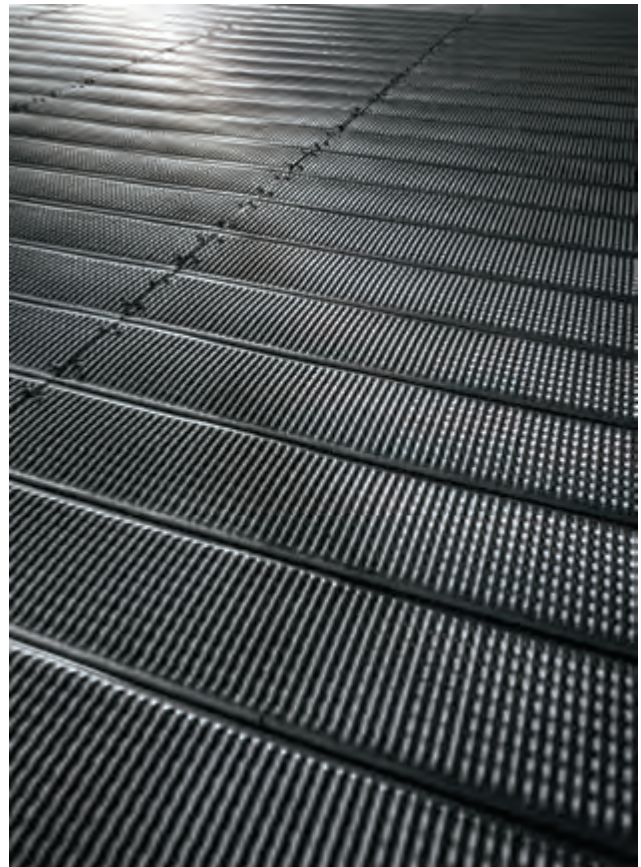
#### FULL AERATION SYSTEM

Silo base is covered by corrugated or locked perforated sheets. This type of aeration is generally used in the plants where humidity is quite high or to decrease the cost of concrete foundation.

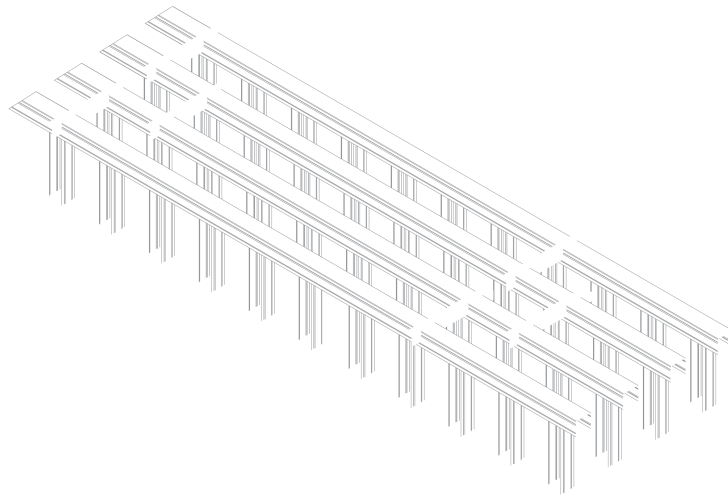
Corrugated Type



Locked Type

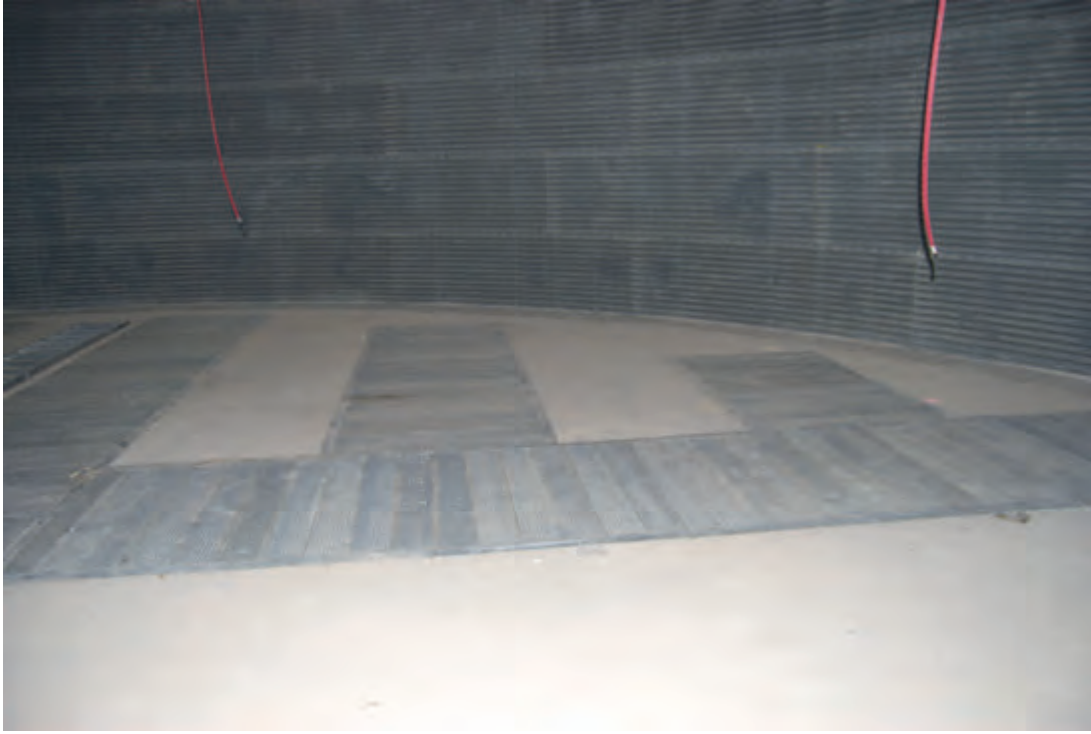


Support rails and support legs of full corrugated aeration system are designed to be endurance to against maximum loads. It is manufactured from galvanized sheet and long lasting.











#### CENTRIFUGAL FANS

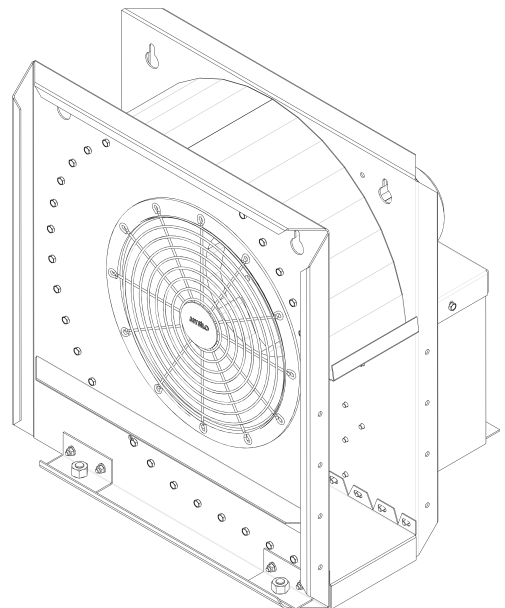
Centrifugal fans are manufactured as high and low speed. The fan housing is designed as galvanized and it is long lasting against corrosion. Turbine design is as airfoil and it provides high performance by getting the dynamic balance. Fan selection is made depending on silo diameter, height and product in silo. Mysilo centrifugal fan is manufactured from galvanized steel sheet and its offers long life against natural conditions.



#### HIGH SPEED CENTRIFUGAL FANS

Mysilo high speed centrifugal fans are recommended to be used in big and high silos also, in cases where the needing high static pressure.

Mysilo centrifugal fans are tested with balance device. This provides to reduce noise and vibration.



PERFORMANCE CHART OF HIGH SPEED CENTRIFUGAL FANS

2950 RPM CENTRIFUGAL FANS Static Pressure									
HP	mm/su	0	50	100	150	200	250	300	350
	inch/su	0	2	4	6	8	10	12	14
3	CFM	4.050	3.450	2.804	1.915				
	m3/h	6.880	5.862	4.764	3.254				
5	CFM	4.703	4.011	3.261	2.227				
	m3/h	7.990	6.815	5.540	3.780				
7,5	CFM	6.100	5.400	4.700	4.100				
	m3/h	10.364	9.175	7.985	6.966				
10	CFM	8.600	7.400	6.400	5.600	4.700	1.500		
	m3/h	14.611	12.573	10.874	9.514	7.985	2.549		
15	CFM	10.800	9.300	8.000	7.000	5.900	4.500	4.100	2.000
	m3/h	18.349	15.801	13.595	11.893	10.024	7.646	6.966	3.398
20	CFM	12.000	11.300	10.600	9.700	8.800	7.800	6.100	3.700
	m3/h	20.388	19.199	18.009	16.480	14.951	13.252	10.364	6.286
30	CFM	18.600	17.100	16.000	15.100	13.900	12.300	11.000	7.700
	m3/h	31.601	29.053	27.184	25.655	23.616	20.898	18.689	13.082
40	CFM	20.000	19.000	18.000	16.800	15.800	14.600	13.600	12.800
	m3/h	33.980	32.281	30.582	28.543	26.844	24.805	23.106	21.747

HIGH SPEED CENTRIFUGAL FAN SIZES

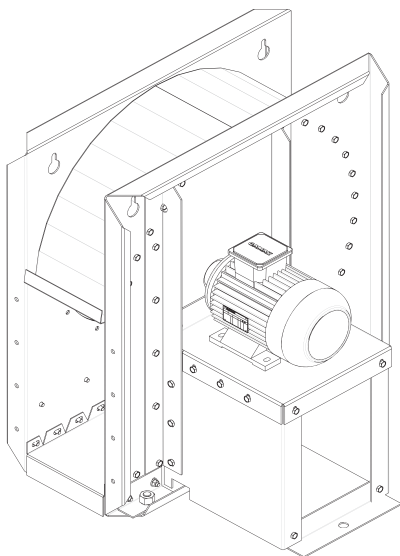


Kod / Code	HP	A	B	C	D	E	F	G	H
FGS-032950	3	501	260	737	318	330	465	816	414
FGS-052950	5,5	501	326	737	386	330	465	816	414
FGS-072950	7,5	580	330	830	380	375	533	933	500
FGS-102950	10	580	350	830	400	375	533	933	500
FGS-152950	15	580	400	830	450	375	533	933	500
FGS-202950	20	685	381	1.000	436	405	643	1136	600
FGS-302950	30	685	431	1.000	456	405	643	1136	600
FGS-402950	40	685	470	1.000	529	405	648	1102	600

LOW SPEED CENTRIFUGAL FANS

Low speed centrifugal fans are recommended to use in short and high capacity silos.

It meets air requirements thanks to 1450 rpm speed and airfoil turbine system. Mysilo centrifugal fans are tested with a balance device. This provides to reduce noise and vibration.

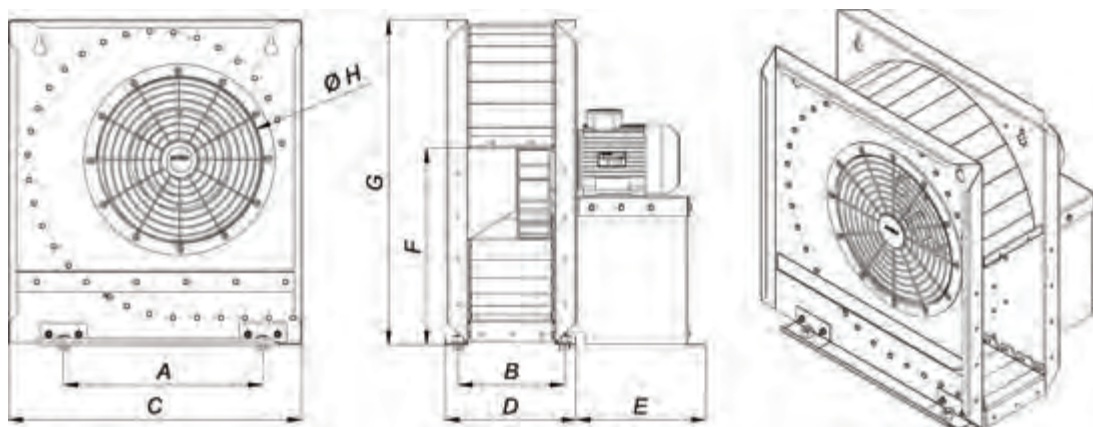


PERFORMANCE CHART OF LOW SPEED CENTRIFUGAL FANS

1450 RPM CENTRIFUGAL FANS									
Static Pressure									
HP	mm/su	0	25	50	75	100	125	150	175
	inch/su	0	1	2	3	4	5	6	7
3	CFM	6.800	5.988	5.223	4.235				
	m3/h	11.553	10.174	8.874	7.195				
5	CFM	10.000	9.100	7.900	6.900	5.800			
	m3/h	16.990	15.461	13.442	11.723	9.854			
7,5	CFM	13.050	12.140	11.200	10.100	8.600	6.200		
	m3/h	22.172	20.626	19.029	17.160	14.611	10.534		
10	CFM	15.103	14.116	13.122	12.054	10.721	8.295		
	m3/h	25.660	23.983	22.294	20.480	18.215	14.093		
15	CFM	19.700	17.070	16.104	15.126	14.047	12.708	10.545	
	m3/h	33.470	29.002	27.361	25.699	23.866	21.591	17.916	
20	CFM	20.579	19.482	18.385	17.291	16.215	15.130	13.957	9.228
	m3/h	34.964	33.100	31.236	29.377	27.549	25.706	23.713	15.678
30	CFM	44.990	41.075	36.994	32.967	28.999	25.288	22.326	15.634
	m3/h	76.438	69.786	62.853	56.011	49.269	42.964	37.932	26.562



## LOW SPEED CENTRIFUGAL FAN SIZES

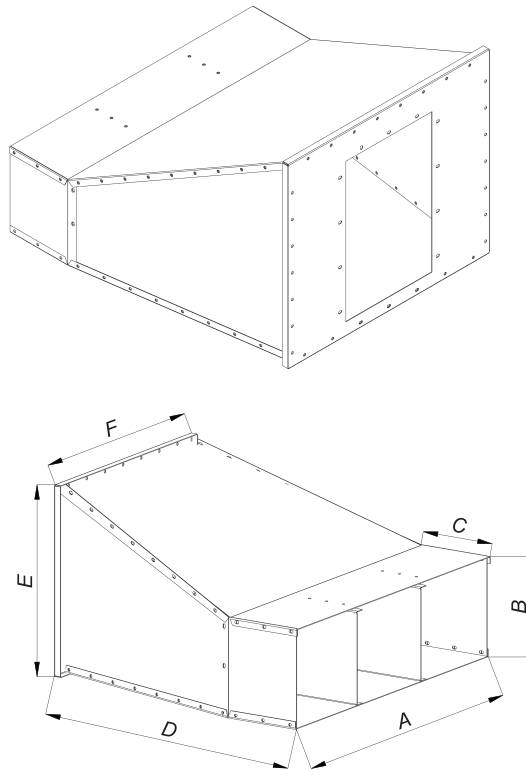


Kod / Code	HP	A	B	C	D	E	F	G	H
FGS-031450	3	710	390	1052	446	357	637	1132	644
FGS-051450	5,5	710	434	1067	488	357	644	1152	589
FGS-071450	7,5	790	470	1.166	523	407	710	1245	670
FGS-101450	10	787	456	1.075	510	407	690	1201	600
FGS-151450	15	800	533	1.156	587	407	768	1356	750
FGS-201450	20	825	576	1.136	630	472	768	1316	700
FGS-301450	30	825	587	1.429	697	468	921	1638	700



#### OPTIONAL PRODUCT

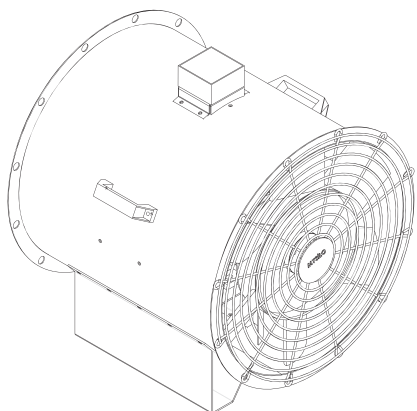
Centrifugal fan shroud is used in order to assemble fan to silo.  
Different type fan shrouds are available and it is manufactured from galvanized sheet.



Kod / Code	HP	A	B	C	D	E	F
FGS-D031450	3	1050	324	250	1169	763	871
FGS-D051450	5,5	1050	324	250	1169	763	871
FGS-D071450	7,5	1050	324	250	1169	763	871
FGS-D101450	10	1050	324	250	1169	783	871
FGS-D151450	15	1050	324	250	1163	956	956
FGS-D201450	20	1050	324	250	1163	956	956
FGS-D032950	3	1050	324	250	973	604	754
FGS-D552950	5,5	1050	324	250	973	604	754
FGS-D752950	7,5	1050	324	250	973	604	754
FGS-D752950	10	1050	324	250	973	604	754
FGS-D152950	15	1050	324	250	973	604	754
FGS-D202950	20	1050	324	250	973	604	754
FGS-D302950	30	1050	324	250	1114	765	873

### Axial Fan

Axial fan is designed to run long term and is manufactured different power. Its strenght motor which is fasten to fan housing, prevents noise and vibration during operation.



Mysilo axial fans is tested with balance device. This provides to reduce noise and vibration. Vanes, which are manufactured from aliminium, provide the best air flow.

PERFORMANCE CHART OF AXIAL FANS

AXIAL FAN Static Pressure									
HP	mm/su	0	25	50	75	100	125	150	175
	inch/su	0	1	2	3	4	5	6	7
1,5	CFM	5.500	4.330	2.750	1.500				
	m3/h	9.295	7.318	4.648	2.535				
3	CFM	6.900	6.210	4.830	3.150	1.870			
	m3/h	11.661	10.495	8.163	5.324	3.160			
5	CFM	13.075	12.025	10.750	8.850	6.430			
	m3/h	22.097	20.322	18.168	14.957	10.867			
7,5	CFM	14.000	12.800	11.500	10.000	7.400	4.800		
	m3/h	23.660	21.632	19.435	16.900	12.506	8.112		
10	CFM	15.300	13.810	12.240	10.540	7.580	3.950		
	m3/h	25.857	23.339	20.686	17.813	12.810	6.676		

Kod / Code	HP	A	B	C	D	E
FS-101	1,5	345	520	560	493	520
FS-103	3	345	520	560	493	520
FS-105	5,5	425	693	735	620	600
FS-107	7,5	425	693	735	620	600
FS-110	10	425	693	735	620	600







